

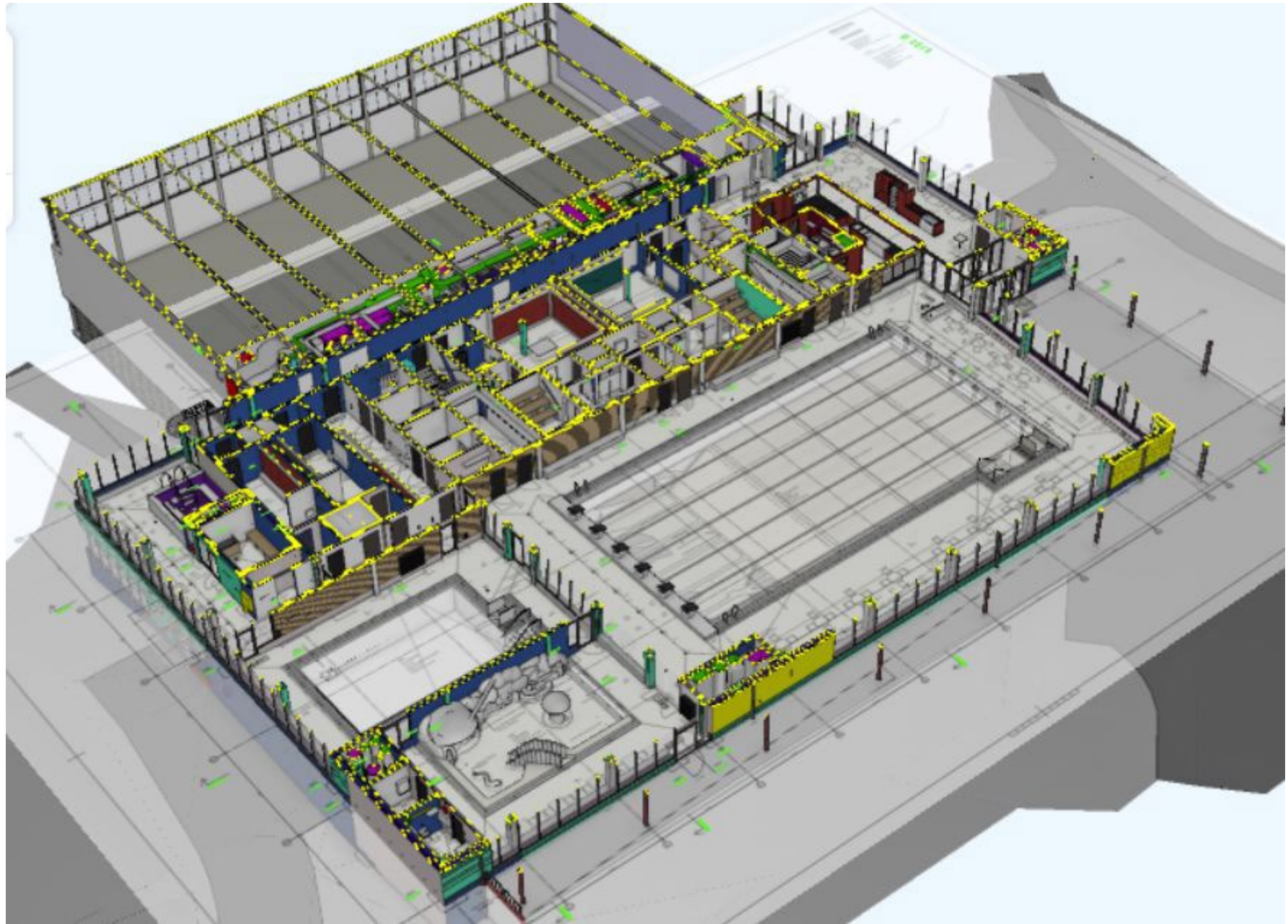


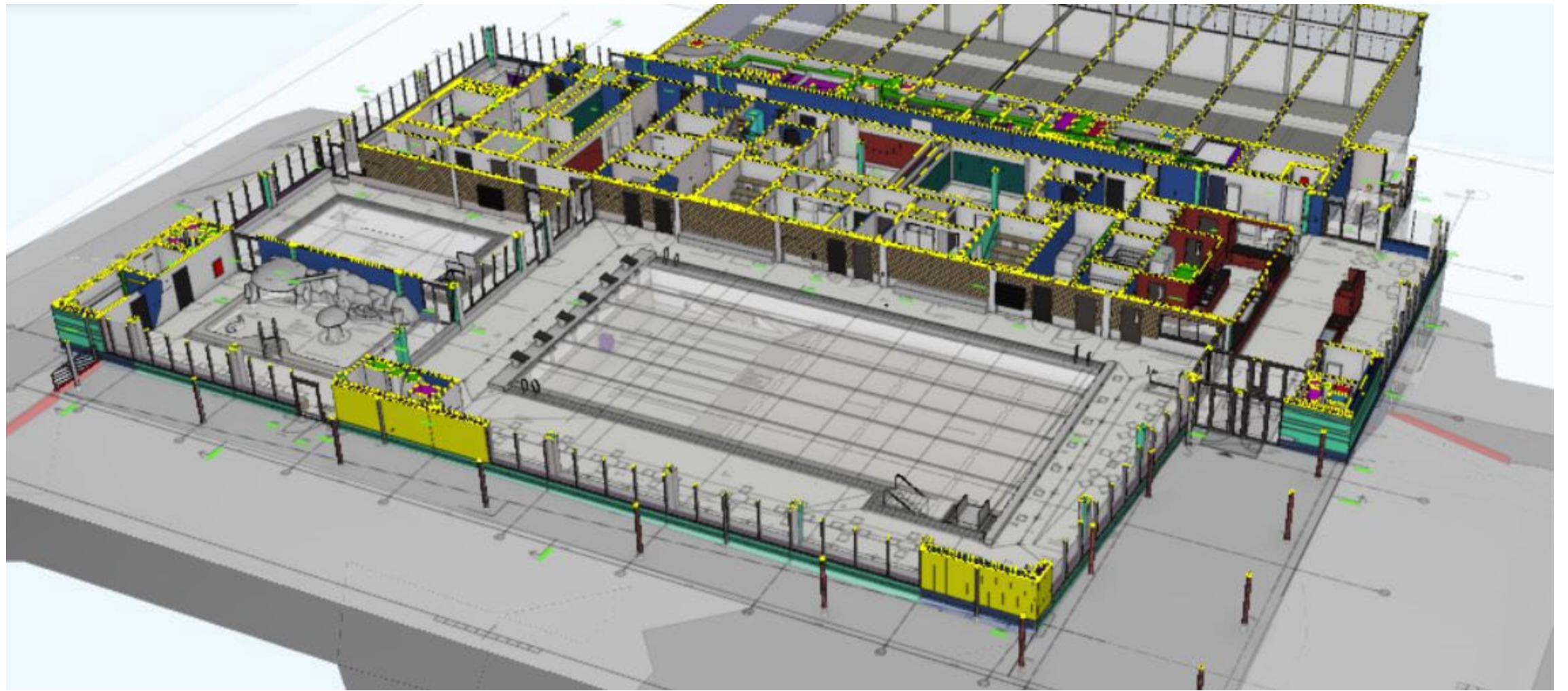
En ny simhall byggs i Spångbergshallen i Filipstad 2022-2023. Samverkan mellan Filipstads kommun och NCC.

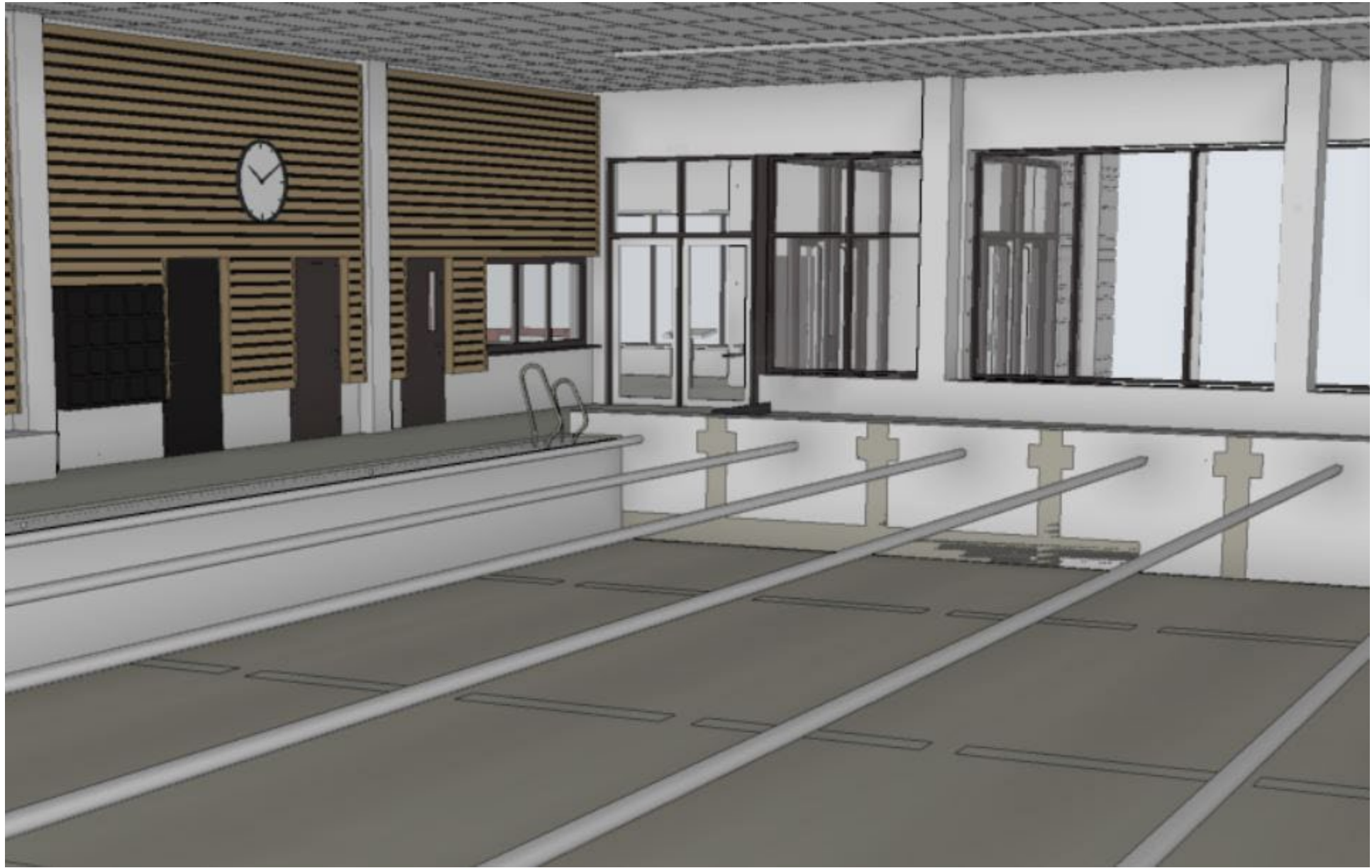
FILIPSTADS SIMHALL

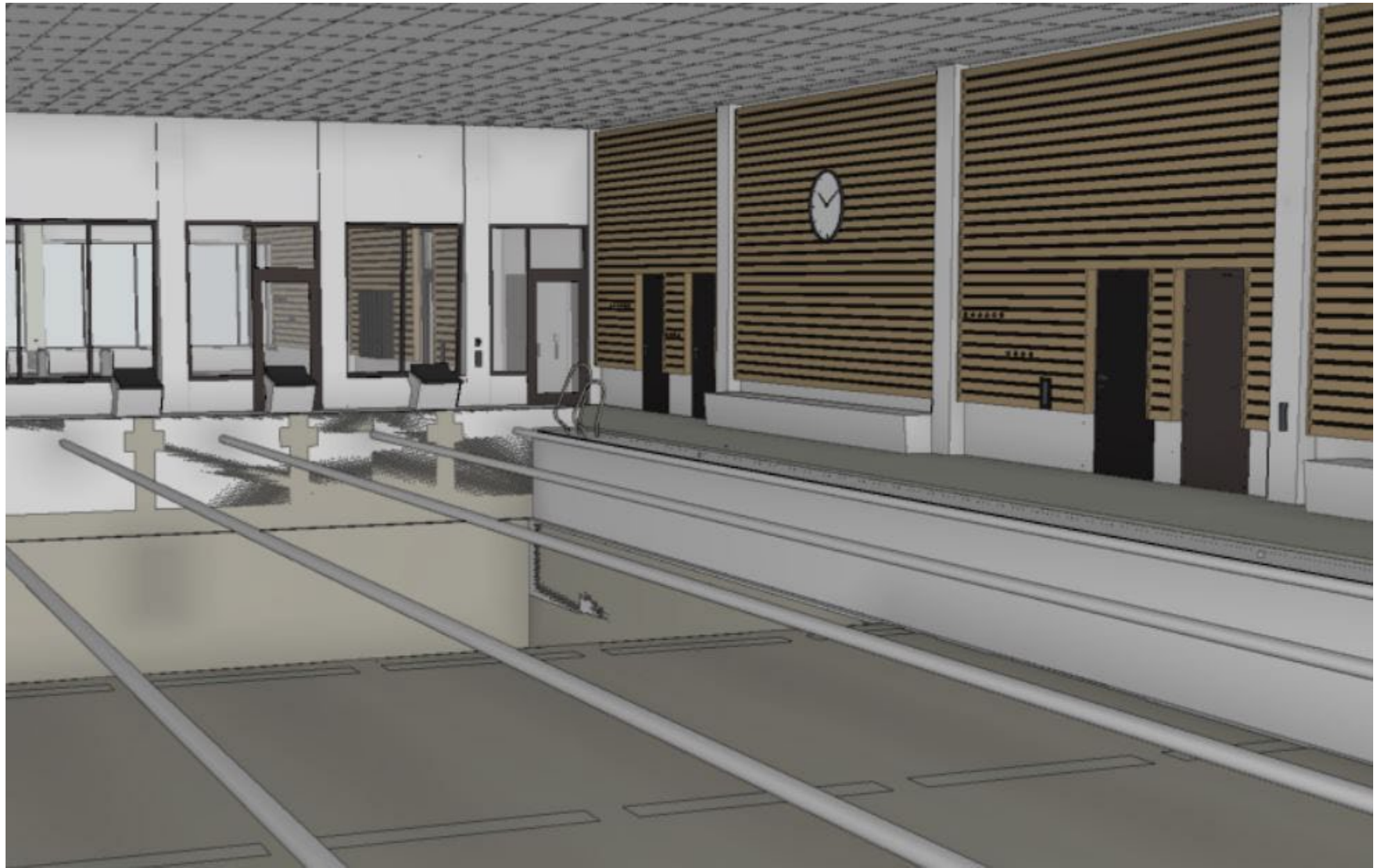




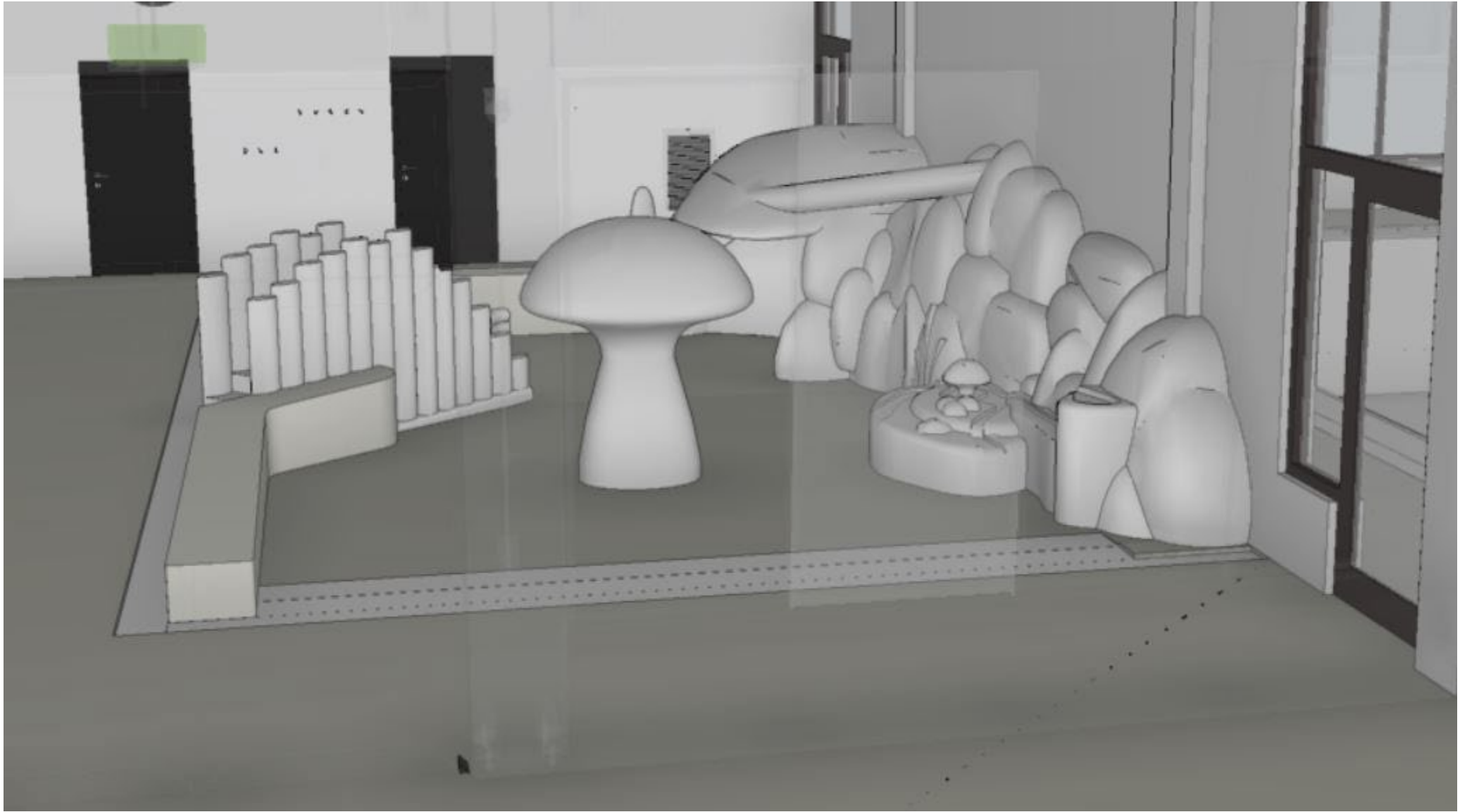


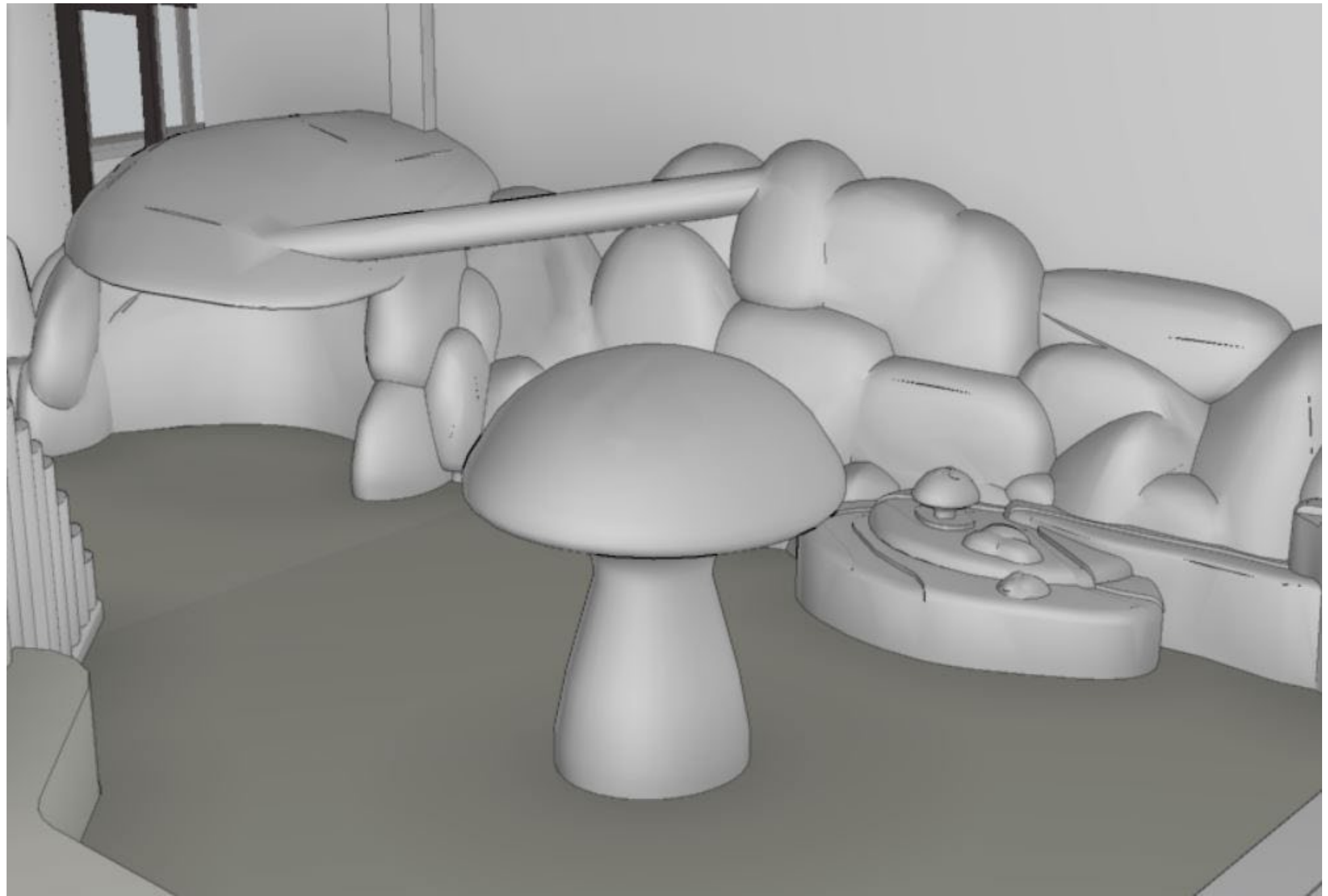
















An architectural rendering of a modern building with a perforated facade. The building features a long, low profile with a series of vertical columns supporting a dark overhang. Large windows are visible along the ground floor, and a glass entrance is on the right. The name 'SPÅNGBERGSHALLEN' is prominently displayed on the upper facade. The background shows a clear sky and distant city buildings.

SPÅNGBERGSHALLEN

